



---

170 W 600 N  
Shelbyville, Indiana 46176  
(317) 398-4636 or  
(317) 398-7973  
FAX (317) 398-2107

## **KASCO'S GRAVITY WAGON AUGER SYSTEM**

- Innovative hopper design allows materials to drop directly into auger for less seed damage and more positive flow.
  - Constructed of PVC plastic outer tube for rust-resistance and easier handling.
  - Choice of steel flighting for fertilizer, brush flighting for seed, or rubber flighting for both seed and fertilizer.
  - Different size hoppers available up to 45".
  - Adapts to most models of gravity wagons.
  - Easy to mount or detach from wagon.
  - Available in 12' or 14' lengths.
  - Heavy duty winch with built-in brake included as standard equipment.
  - Hydraulic hoses to front of wagon included; shut-off valve included.
  - Heavy duty transport bracket locks auger in place.
-



## LIMITED WARRANTY

Kasco Mfg. Co., Inc., hereinafter referred to as "Kasco" warrants all its products against defects in materials and workmanship for one year after date of purchase, except those component parts not manufactured by "Kasco" which parts are warranted by "Kasco" only to the extent of the original manufacturers warranty.

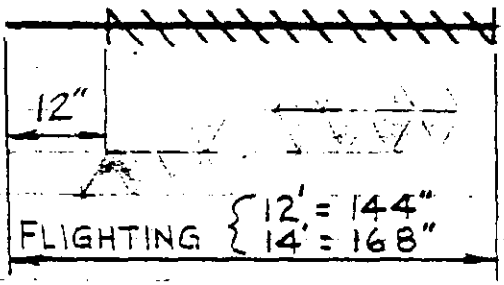
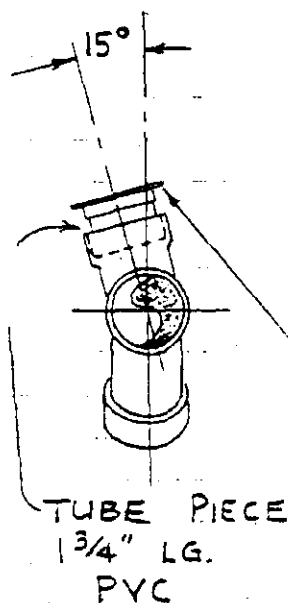
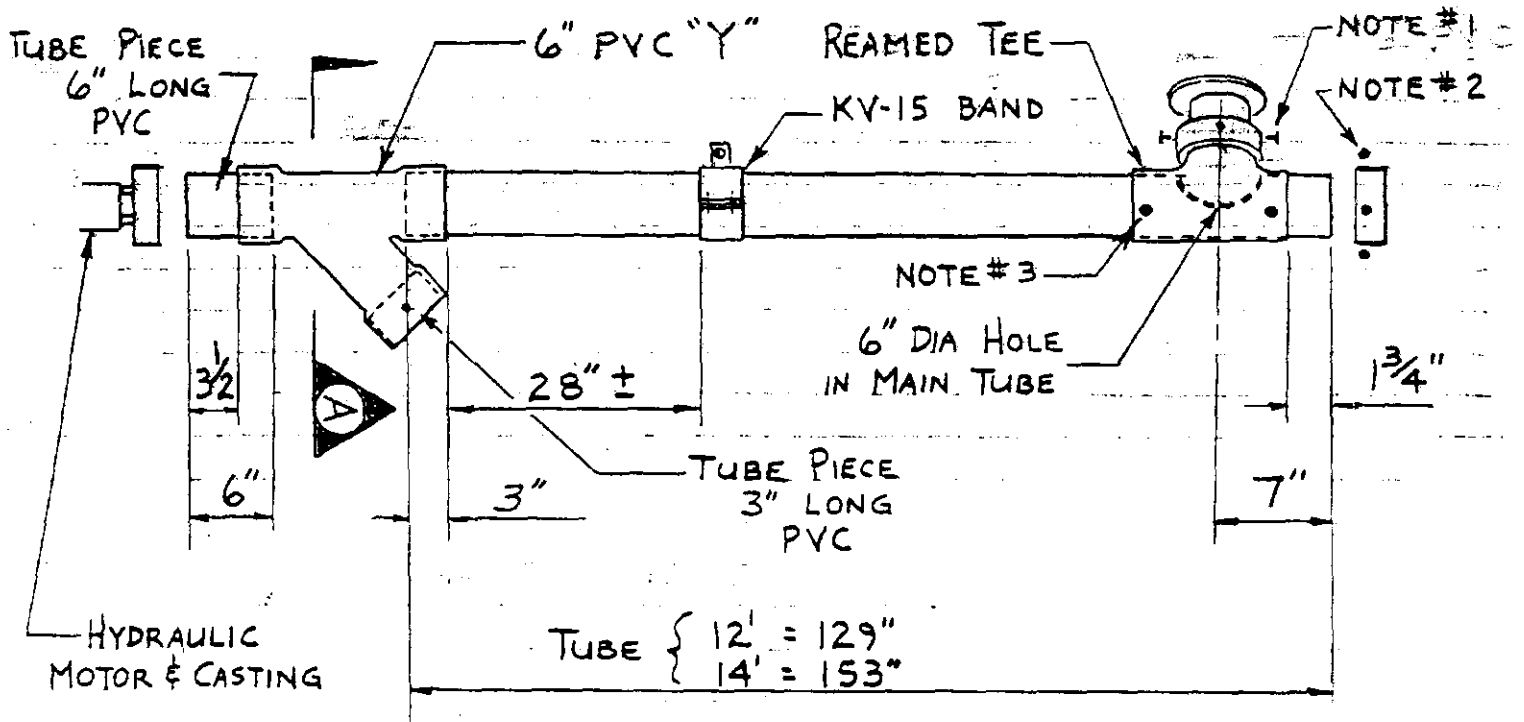
Should any part manufactured by "Kasco" prove defective within one year from date of purchase, supposed defective part shall be returned freight paid to our "Kasco" factory for Kasco's consideration. If found to be defective by "Kasco", credit will be issued through proper channels, distributor and/or dealer.

Kasco will not assume liability for any labor costs, loss or damage caused by defective part, or consequential damages or operational delays.

Altering or misuse of a part may void "Kasco's Warranty". Repairing of a part without the expressed permission of "Kasco" voids the "Kasco Warranty".

"Kasco" neither assumes nor authorizes any person to assume for "Kasco" any other obligations or liability in connection with the sale of its equipment.

"Kasco" reserves the right to make improvements in design or changes in specifications at any time without incurring any obligations to owners of equipment previously sold.



ANGLE RING w/ 6" O.D.  
X 3" LG STEEL COLLAR  
(SEE NOTE #1)

SECTION A-A

NOTES:

1. (4) 1/4 x 1/4 HHCS 90° APART w/ FW, LW AND HEX NUT ON OUTSIDE.
2. BLIND CASTING w/ (4) 5/16" x 1/2" LG SELF TAPPING BOLTS 90° APART.
3. SLIDE REAMED TEE OVER HOLE IN MAIN TUBE (DO NOT GLUE). ORIENT AS SHOWN IN SECTION A-A, ATTACH w/ (4) 5/16" x 1/2" LG SELF TAPPING BOLTS, 2 ON EACH SIDE.

# GRAVITY WAGON AUGER

QUAN

TUBE ASSY:				
GWA-122	12' AUGER TUBE			1
GWA-242	14' AUGER TUBE			1
GWA-	TUBE 6" $\phi$ x 6" LG PVC			1
GWA-	TUBE 6" $\phi$ x 1 $\frac{3}{4}$ " LG PVC			1
GWA-	TUBE 6" $\phi$ x 3" LG PVC			1
GWA-125	ANGLE IRON RING WELDMENT			1
GWA-137	PVC "Y"			1
GWA-138	PVC 90° "T" REAMED			1
GWA-139	END CAP CASTING			1
KV-15	BAND ASSEMBLY			1
KRS-BC-9	WHITE HYDRAULIC MOTOR			1
KV-17	MOTOR MOUNT CASTING			1

GWA-FLEX HOSE ASSY:				
GDA-910	6" FLEX HOSE x 5'-0" LG			1
GDA-911	6" HOSE CLAMP			1
GDA-913	6" x 5" LG STEEL TUBE			1

GWA HARDWARE BOX:				
GWA-126	6" ANGLE RING CLAMP			1
GWA-129	HANGER BRACKET (LEFT & RIGHT)			1 EA
GWA-130	TRANSPORT BRACE			1
GWA-131	TRANSPORT BRACE STRAP			1
GWA-150	WINCH			1
GWA-132	$\frac{3}{16}$ " $\phi$ CABLE 126" LG.			1
GWA-133	THIMBLE			1
GWA-134	CABLE CLAMP			1
GWA-135	CABLE ROLLER ASSY			1
GWA-140A	CHAIN 72"			1
GWA-140B	CHAIN 55"			1
GWA-141	TRANSPORT BAND			1
GWA-142	VALVE BAND			1
GWA-151	WINCH BAND			1
GDA-916	4" PLAIN BAND			3
GWA-143	VALVE			1

WINCH ASSEMBLY

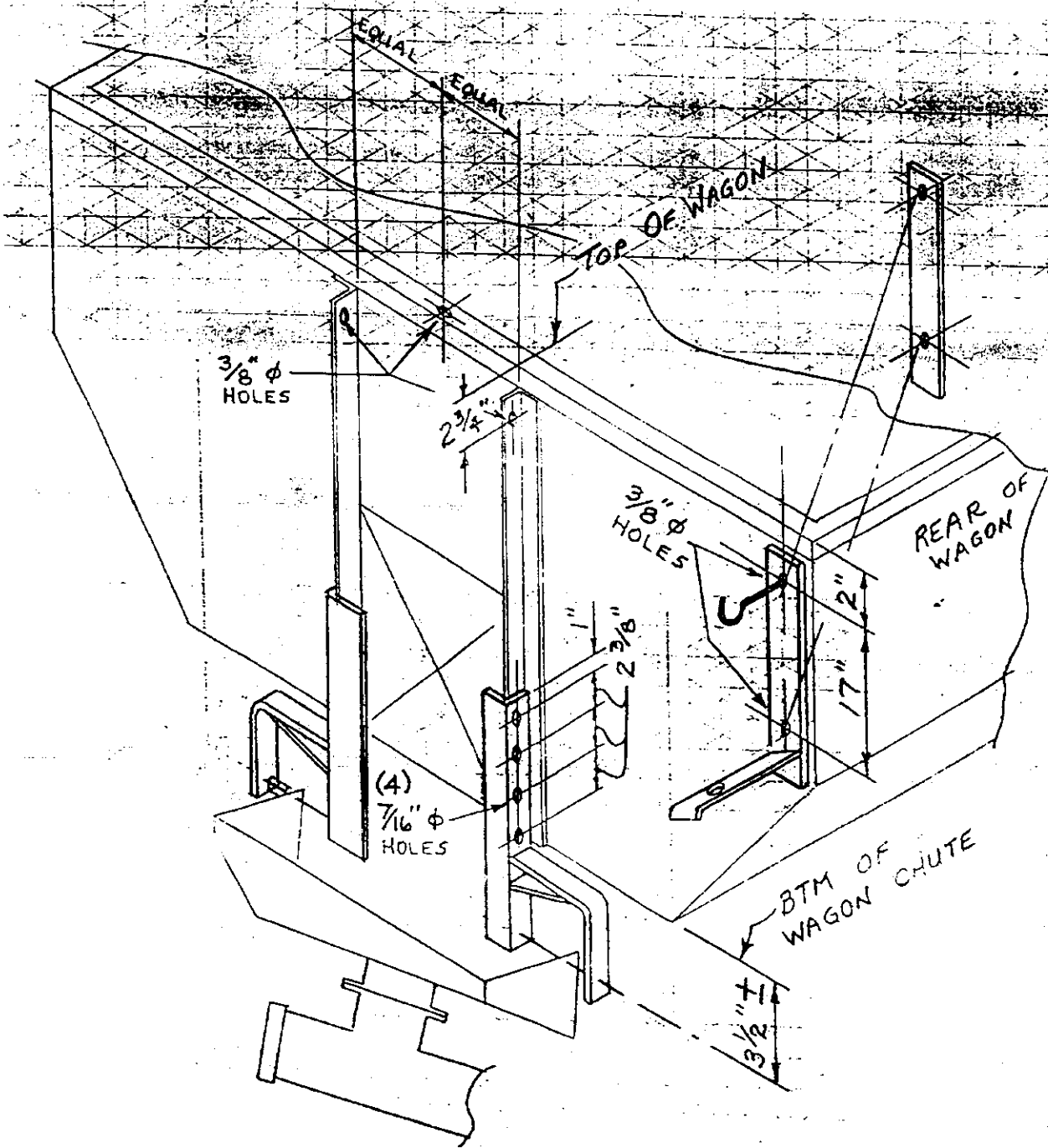
(CONTINUED)

# GRAVITY WAGON AUGER (CONT.)

		<u>QUAN</u>
GWA HARDWARE BOX (CONT.)	GWA-148 ROPE $\frac{1}{4}$ " x 6'-0"	1
	GWA-148 $\frac{5}{8}$ " PIN w/ $\frac{1}{8}$ " LYNCH PIN	2
	GWA-154 $4\frac{1}{2}$ " SPACER TUBE	1
	GWA-144 HYDRAULIC HOSE X 22"	1
	GWA-145     X 20"	1
	GWA-146     X 180"	1
	GWA-147     X 178"	1
	GWA-BOLT BAG	1
	GWA- 4" WD REINF RUBBER STRIP	1

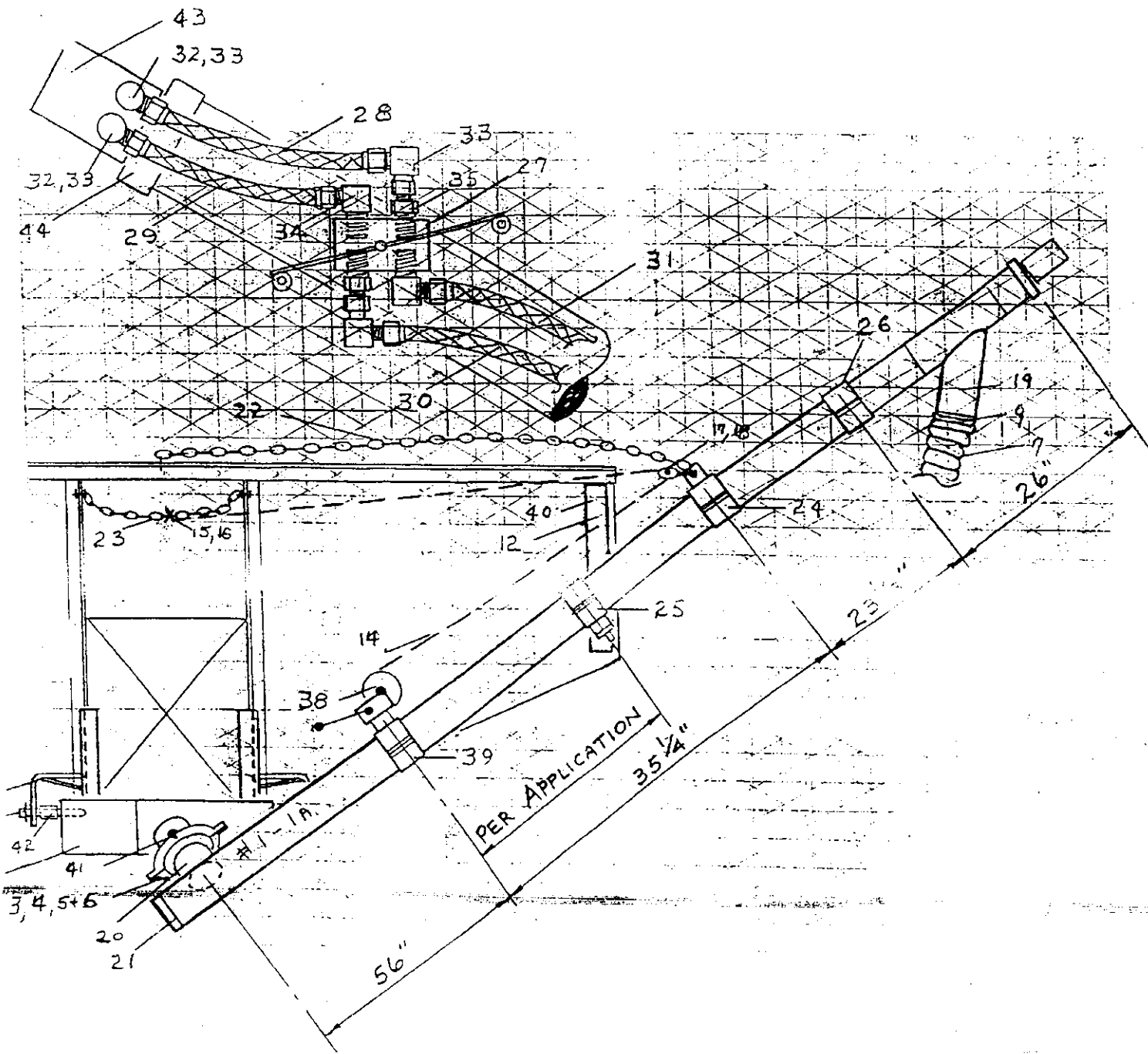
## GWA - BOLT BAG :

GWA-136 CHAIN CONNECTOR	3
XH-71 HYDRAULIC FITTINGS	2
XH-62	4
GWA-155	2
XH-65	4
GWA-152 $\frac{3}{8}$ " x $3\frac{1}{2}$ " J-BOLT	1
$\frac{1}{4}$ " LYNCH PIN	1
$\frac{1}{2}$ x $2\frac{1}{2}$ HHCS	1
$\frac{3}{8}$ x $2\frac{1}{2}$ HHCS	12
$\frac{3}{8}$ x $1\frac{1}{4}$ HHCS	10
$\frac{1}{4}$ x 1" HHCS	6
$\frac{1}{2}$ " LOCKWASHER	1
$\frac{1}{4}$ " LOCKWASHER	6
$\frac{3}{8}$ " LOCKWASHER	24
$\frac{3}{8}$ " FLATWASHER	5
$\frac{1}{4}$ " HEX NUT	6
$\frac{3}{8}$ " HEX NUT	24
$\frac{1}{2}$ " HEX NUT	1
#10 x $\frac{3}{4}$ SELF TAPPING SCREW	2
$\frac{1}{4}$ " FLAT WASHER	6



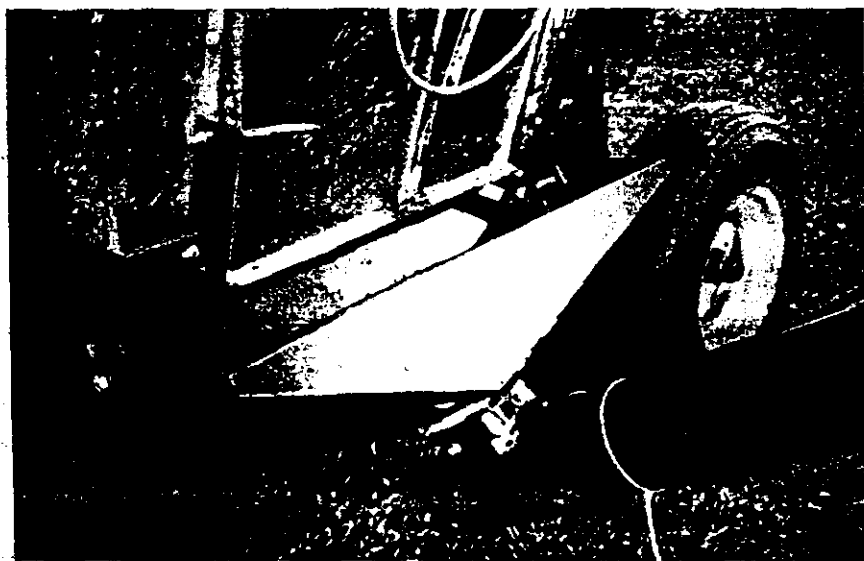
GWA HARDWARE BOX

GWA-126 6" angle ring clamp	1
GWA-129 hanger bracket (left & right)	1
GWA-130 transport brace	1
GWA-131 transport brace strap	1
GWA-Winch assm. Consisting of:	
1 - GWA-150 winch	
1 - GWA-132 3/16" cable 126"	
1 - GWA-133 thimble	
1 - GWA-134 cable clamp	
1 - GWA-135 cable roller assm	
GWA-140A chain 72"	1
GWA-140B chain 55"	1
GWA-141 transport band	1
GWA-142 valve band	1
GWA-151 winch band	1
GWA-916 4" plain band	3
GWA-143 valve	1
GWA-148 rope	1
GWA-149 5/8" pin	2
GWA-154 4-1/2" spacer tube	1
GWA-144 hydraulic hose	1
GWA-145 hydraulic hose	1
GWA-146 hydraulic hose	1
GWA-147 hydraulic hose	1
GWA-160 4" reinforced rubber strip	1
GWA-Bolt Bag Consisting of:	
3-GWA-136 chain connector	
2 - XH-71 hydraulic fitting	
4 - XH-62 hydraulic fitting	
2 - GWA-155 hydraulic fitting	
4 - XH-65 hydraulic fitting	
1 - GWA-152 J-bolt	
1 - 1/4" lynch pin	
1 - 1/2 x 2-1/2 HHCS	
12 - 3/8 x 2-1/2 HHCS	
10- 3/8 x 1-1/4 HHCS	





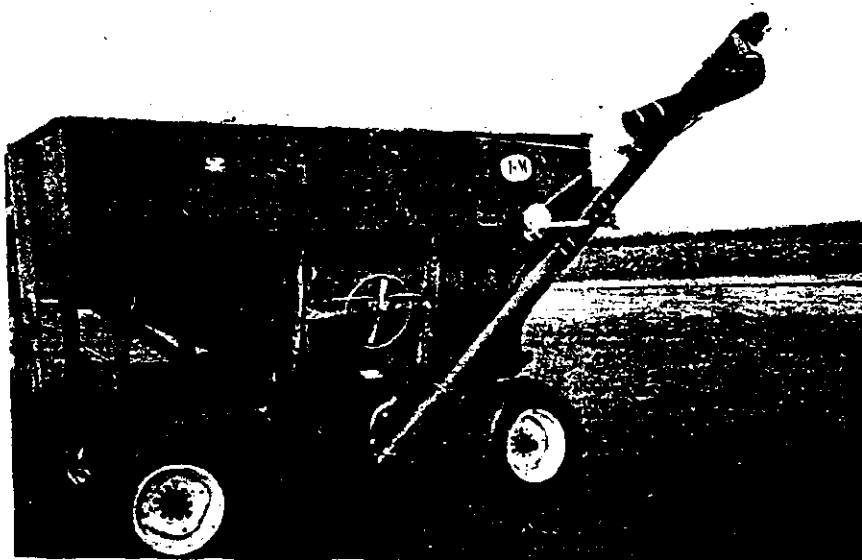
# GRAVITY BED AUGERS



Innovative design of hopper reduced grain damage and increases volume.

Plastic outer tube - choice of steel or rubber flighting.

Quick and easy filling using bulk seed.



Hydraulically driven by tractor pulling wagon.

Available in 12' or 14' lengths.

KASCO MFG. CO. INC.  
170 W. 600 N.  
Shelburne, VT 05476  
(802) 985-7100